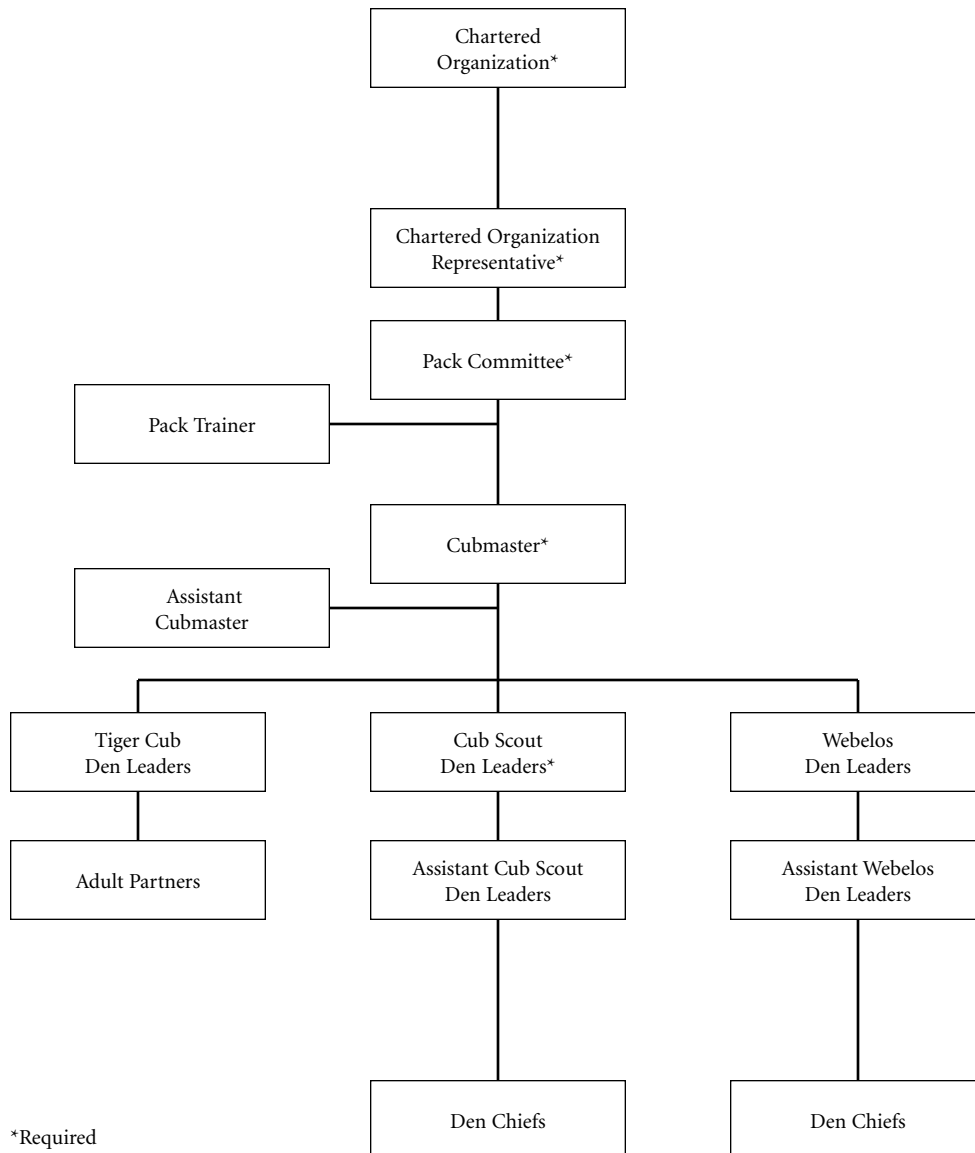




All Cub Scout packs are registered with the Boy Scouts of America and are part of the worldwide brotherhood of Scouting. Each pack belongs to a chartered organization, and families are an important part of that chartered organization. The following organization chart shows how Cub Scouting is structured and the responsibilities of its leadership.



## Pack Organization Chart



\*Required

## Leaders' Responsibilities

**Chartered organization:** Every Cub Scout pack belongs to an organization with interests similar to those of the BSA. This organization might be a religious, civic, fraternal, educational, or other group that has applied for and received a charter from the BSA to operate a Scouting unit. The chartered organization provides a suitable meeting place, adult leadership, supervision, and opportunities for a healthy Scouting life for the boys under its care.

**Chartered organization representative:** A member of the organization who is the liaison between the chartered organization and the pack. Represents the organization on the local council level.

**Pack committee:** A group of qualified adults appointed by the chartered organization to administer the affairs of the pack.

**Pack trainer:** A member of the pack committee and registered leader of the pack, at least 21 years old, who is responsible for orienting new parents as well as seeking the goal of having 100 percent of pack leadership trained in their position responsibilities.

**Cubmaster:** A registered member leader of the pack, 21 or older. Emcees monthly pack meetings, aids den leaders by coordinating the monthly program, helps the committee recruit new leaders as needed, and attends the monthly pack leaders' meeting.

**Den leader:** A registered leader of the pack, at least 21 years old, who leads a Tiger Cub, Cub Scout, or Webelos Scout den of five to eight boys at weekly den meetings.

**Assistant den leader:** A registered leader of the pack, 18 or older, who assists the Tiger Cub, Cub Scout, or Webelos Scout den leaders at the weekly den meetings.

**Adult partner:** The adult partner is a parent or other adult who co-registers with a boy as part of a Tiger Cub team. Each boy-adult partner team assumes the responsibility of hosting one or more months of den meetings with the den leader. The host team and the den leader plan the meeting program and the location.

**Den chief:** An older Boy Scout, Varsity Scout, or Venturer appointed to help direct the activities of a Cub Scout den.